



## Summary

IntelTrac enables manufacturers and processors to achieve reliable, safe and profitable operations through consistent execution of best practices by the field workforce – accelerating and sustaining mainstream process improvements.

## Business Value

- Key success factor for field operational excellence
- Helps steward the consistent execution of best practices
- Provides strategy for monitoring stranded assets
- Supports rapid response to changing business conditions
- Key success factor for equipment reliability
- Helps assimilate new field workers



# Wonderware IntelTrac 4.0

## THE INDUSTRY LEADING MOBILE WORKFORCE & DECISION SUPPORT SYSTEM

IntelTrac® accelerates and sustains operational process improvements and is a key component of an effective Operations Management System. IntelTrac helps insure that best operating and regulatory procedures are followed at all times, data is collected on non-instrumented plant assets, critical environmental, health and safety inspections are performed on schedule and mobile operators have the information at their fingertips to operate plant assets in the most effective manner possible.



## HELPING YOUR FRONT LINE MANAGE YOUR BOTTOM LINE

Operational Excellence starts with operators. IntelTrac brings the field operator into the automation loop by utilizing a combination of workforce management software, mobile handheld computers, monitoring devices and Radio Frequency Identification (RFID) equipment tags or bar codes. This mobile framework results in a significantly improved decision support system for managing plant assets.

Workers are easily guided through a question and answer process which helps uncover hidden bottlenecks and process or equipment problems. If problems are found, IntelTrac can immediately guide workers through additional steps or actions to properly identify and address the developing issue.

IntelTrac's exception-based, web reports keep everyone on the team up-to-speed on the current state of plant operations.

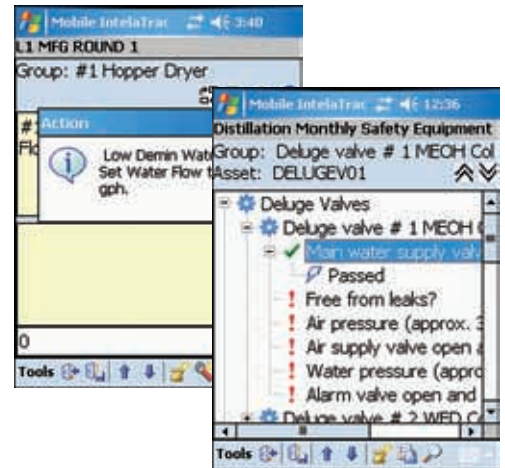
IntelTrac's web services-based API connectivity ensures the lowest total cost of ownership by adding a highly extensible mobile platform.

## ENFORCE BEST OPERATING PROCEDURES

Best practices are only meaningful if they are consistently and broadly applied across an enterprise. IntelTrac rounds are presented to mobile workers and each step can be tracked to ensure compliance and accountability.

## STRATEGY FOR STRANDED ASSETS

Stranded or non-instrumented assets often represent 40–60% of your asset base but are too often “invisible” to management. IntelTrac provides a cost effective strategy for monitoring and reporting back on the performance of stranded assets.



## RESPOND FASTER AND IMPROVE YOUR COMPETITIVENESS

For the first time you can execute pre-defined strategies when your business or environmental conditions change allowing you to improve your organizational agility and competitiveness. IntelTrac’s Dynamic Procedures allow pre-configured procedures to be automatically passed to your field operators so they can begin securing a facility or ramping up production on a moment’s notice. Teams know exactly what to do and when. Lag time and confusion are minimized.

As conditions change IntelTrac’s highly extensible and open mobile platform can also deliver mobile procedures directly from a wide range of plant systems. The mobile worker then executes these specific tasks and forwards any collected information back to the host system. Plant systems never designed with a mobile capability, such as historians, LIMS systems, MES systems and CMMS/EMS systems can now incorporate mobile task execution and field data collection.

## ACHIEVE GREATER PROCESS RELIABILITY AND ASSET EFFECTIVENESS

IntelTrac empowers field workers to be part of the reliability solution, it helps drive collective behavior and a culture of asset ownership between operations and maintenance. Equipment condition data such as vibration or temperature can be easily collected by field operators using the IntelTrac mobile solution as they do their regular operating rounds. Stranded or Non-instrumented plant assets can now be efficiently monitored.



## BETTER MANAGE WORKFORCE TURNOVER

IntelTrac’s innovative on-the-job training approach gets your newest field workers up to speed—FAST. IntelTrac allows experienced workers to incorporate their knowledge into operating and inspection rounds. This means best practices can be easily documented and used by all field workers, even the most junior of operators—insulating plants or facilities from a sudden loss of operating knowledge.

## UNIFYING YOUR FIELD WORKFORCE WITH YOUR PLANT AUTOMATION SYSTEM

Now the state-of-the-art Wonderware System Platform can share data with your IntelTrac equipped mobile workforce. The myriad of plant automation data can now be funneled to your mobile workers keeping them up-to-date on current operational conditions. You can also use the Mobile IntelTrac system to push field collected data back up into the automation system so it can be exposed in operator displays or to engineers or managers utilizing plant information portals.

## IMPROVING THE EFFICIENCY OF YOUR MAINTENANCE ORGANIZATION

IntelTrac is a natural tool for improving the efficiency of maintenance activities. Mobile IntelTrac can be loaded with a complete list of daily maintenance tasks (including step-by-step instructions) so critical maintenance can be done right the first time.

If a wireless network is present, information on work order status, work requests, and current operating conditions can be made available to your field workers in real time. Maintenance workers will have the detailed information at their fingertips so they can get the job done in the shortest possible time.

## BETTER FIELD MANAGEMENT OF CAPITAL PROJECTS

Even with the best team, managing the installation and commissioning of new capital projects and turnarounds can be challenging. How do you know when specific field tasks have been accomplished? And if things change, and they always do, how do you ensure that everyone is on the same page?

IntelTrac can provide the vital mobile infrastructure, including RFID location verification technology, that you can exploit to keep everyone informed and working the task list.



## SYSTEM OVERVIEW

IntelTrac is an enterprise level software and hardware solution that delivers a mobile workforce management solution to a wide range of industries.

## SERVER COMPONENTS/INTEGRATION SOFTWARE

**IntelTrac Database Server:** Microsoft SQL Server based database management server

**IntelTrac Synchronization Server:** Mobile device communication server

**IntelTrac Web Server:** Web report server

**Integration Modules:** Software modules that integrate third party enterprise and plant systems to IntelTrac (SAP PM, IBM Maximo, OSIsoft PI System, AspenTech IP21, Syntex IMPACT and others)

## DESKTOP INTELATRAC CLIENTS

**IntelTrac Procedure Builder:** Desktop application for configuring and scheduling field procedures and data collection tasks

**IntelTrac Auditor Plus:** Desktop application for viewing the status of field rounds, exceptions and notes

**IntelTrac Web Report Manager:** Web client that allows users to view and configure web based reports

## MOBILE INTELATRAC CLIENT

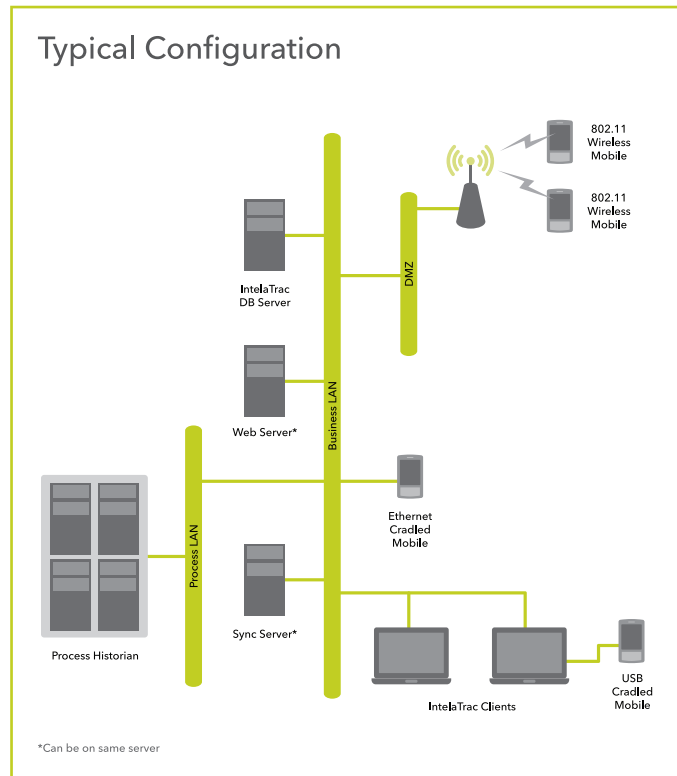
**Mobile IntelTrac:** Windows Mobile client that provides a "best in class" browser style user interface for IntelTrac procedures and data collection tasks on mobile devices

## MOBILE DEVICES AND PERIPHERALS

IntelTrac supports a broad selection of Windows Mobile based handheld computers from Motorola/Symbol, Intermec, Bartec and others. Supported peripherals include; RFID and barcode readers, vibration probes, temperature guns and wireless communication devices.

## WHERE TO LEARN MORE

Visit the Invensys Operations Management website, [iom.invensys.com](http://iom.invensys.com), to learn more about IntelTrac and our complete line of mobile solutions. There is also a complete list of authorized distributors of IntelTrac who can sit down with your team and discuss how IntelTrac can transform your business.



[www.wonderware.fi](http://www.wonderware.fi)

**Helsinki**  
tel. +358 9 540 4940  
[automation@klinkmann.fi](mailto:automation@klinkmann.fi)

**Yekaterinburg**  
tel. +7 343 376 5393  
[info@wonderware.ru](mailto:info@wonderware.ru)

**St. Petersburg**  
tel. +7 812 327 3752  
[info@wonderware.ru](mailto:info@wonderware.ru)

**Samara**  
tel. +7 846 273 95 85  
[info@wonderware.ru](mailto:info@wonderware.ru)

**Moscow**  
tel. +7 495 641 1616  
[info@wonderware.ru](mailto:info@wonderware.ru)

**Kiev**  
tel. +38 044 495 33 40  
[info@wonderware.com.ua](mailto:info@wonderware.com.ua)

**Riga**  
tel. +371 6738 1617  
[info@wonderware.lv](mailto:info@wonderware.lv)

**Vilnius**  
tel. +370 5 215 1646  
[info@wonderware.lt](mailto:info@wonderware.lt)

**Tallinn**  
tel. +372 668 4500  
[info@wonderware.ee](mailto:info@wonderware.ee)

**Minsk**  
tel. +375 17 200 0876  
[info@wonderware.by](mailto:info@wonderware.by)